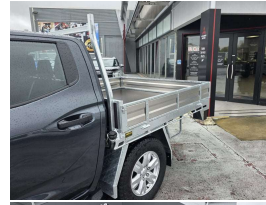


2025 Mitsubishi Triton GLX D/Cab Flat Deck



VEHICLE INFORMATION

Cash Price

Includes GST

\$56,590

+ on-road-costs

Body

Ute

Reg No.

-

Odometer

-

Ext Colour

Graphite Grey

Engine

2442 cc

History

-

Fuel Type

Diesel

Seats

5 seats

Transmission

Automatic

Interior

-

Fuel Saver Rating

2.00 out of 6 stars

Audio

-

VIN

MMAZLLC20SH021252

Stock ID

518988

Finance this vehicle
from only

\$286.24

per week*

Gain peace of mind
with Mechanical
Breakdown
Insurance. Ask us
how.

Features / Comments

Built to graft and styled to impress this 2026 Mitsubishi Triton GLX Double Cab Flatdeck 4x4 2026 in Graphite Grey is the ultimate no-nonsense workhorse, now paired with a premium Gibbons Engineering flat deck setup. Under the bonnet sits Mitsubishi's all-new bi-turbo 2.4L engine, delivering strong, efficient performance with serious pulling power. Matched with the advanced Super Select II 4WD system, complete with centre diff lock, this Triton is just as capable off-road as it is on-site and with a factory rear diff lock, its ready when the terrain turns tough. The Gibbons Engineering flat deck is a standout feature known across NZ for quality and durability. Its built to handle real workloads, offering excellent tie-down options, a clean finish, and the practicality tradespeople demand. Key features include:

Super Select II 4WD system with centre diff lock

Masterton

Phone 0800 ECLIPSE, Email office@wairarapamitsubishi.co.nz

313 Queen Street, Masterton

*Finance calculation based on a 60 month term, no deposit and with an example annual fixed interest rate of 10.95%. Actual interest rate may be higher or lower. Includes an establishment fee of \$525 and a monthly maintenance fee of \$0.00. Full term amount payable of \$74,424. Estimate only, not an offer of finance. Terms, conditions and lending criteria apply.