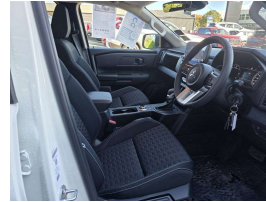


2026 Mitsubishi Triton GLX Sport 4x4



VEHICLE INFORMATION

Cash Price

Includes GST

\$49,990

+ on-road-costs

Body

Ute

Reg No.

RTC394

Odometer

1,000 km

Ext Colour

Cardrona

Engine

2442 cc

History

-

Fuel Type

Diesel

Seats

5 seats

Transmission

Automatic

Interior

-

Fuel Saver Rating

2.00 out of 6 stars

Audio

-

VIN

MMAJLLC20TH006224

Stock ID

522772

Finance this vehicle
from only

\$253.17

per week*

Gain peace of mind
with Mechanical
Breakdown
Insurance. Ask us
how.

Features / Comments

Built tough for work, refined enough for everyday driving this 2026 Mitsubishi Triton GLX Sport Demo in stunning Cardrona is the ute that does it all. Combining rugged capability with sharp modern styling, the latest-generation Triton continues to set the benchmark for comfort, technology, and performance in the ute market.

Powered by Mitsubishi's impressive new-generation bi-turbo 2.4L diesel engine paired with a smooth automatic transmission, the Triton delivers effortless pulling power, excellent fuel economy, and the confidence of Mitsubishi's legendary durability. Whether you're towing, touring, or tackling the daily commute, this GLX Sport is ready for it all.

Finished in the eye-catching Cardrona grey, this demo model stands out with its bold front-end styling, alloy wheels, side steps, sports bar, and modern interior packed with the latest features.

Features include:

Masterton

Phone 0800 ECLIPSE, Email office@wairarapamitsubishi.co.nz

313 Queen Street, Masterton

*Finance calculation based on a 60 month term, no deposit and with an example annual fixed interest rate of 10.95%. Actual interest rate may be higher or lower. Includes an establishment fee of \$525 and a monthly maintenance fee of \$0.00. Full term amount payable of \$65,824. Estimate only, not an offer of finance. Terms, conditions and lending criteria apply.